

Mini-D “MD” Connectors

Miniature 38999 plug & receptacle

CINCH MINI-D “MD” Connectors deliver highly reliable performance equal to MIL-DTL-38999 for military, aerospace, medical and down hole applications at a reduced size and weight.

The MD line connector manufacturing, machining, molding and assembly is done at the factory in Miami, FL. As a global leader, Cinch has provided superior performance and long term reliability since 1917.



+1 305.234 1000
inquiry@cinch.com
cinch.com

Mini-D "MD" Connectors

Products

- Miniature 38999 plug with solder or crimp contacts
- Miniature 38999 jam nut or box mount receptacle with solder, crimp or pc tail contacts
- Standard or specialty platings available

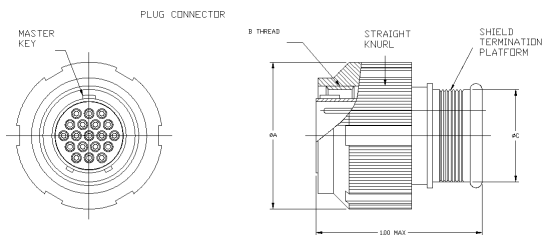
Features

- Full performance in extreme environments
- Available in Crimp, Solder and PC tail terminations
- Shell styles include jam nut receptacle, square flange receptacle and in line plugs
- Available in 6,7,8,9,10,13 shell sizes
- Contact arrangements range from 1 to 130 contacts
- Standard interface, intermateable with Amphenol 2M series and Glenair's Mighty Mouse® 801 series

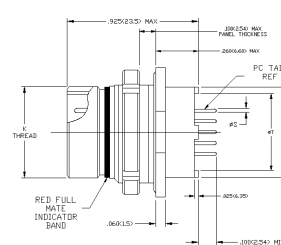
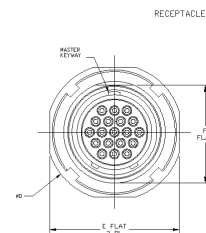


Shell Size	Plug Dimensions							Receptacle Dimensions					
	A Style 16 Dia.	A Style 26 Dia.	B Thread	C Dia.	D Dia.	E Flat	F Flat	K Thread	M Dia.	P Dia.	S Dia.	T Dia.	Y Flat
9	.81 (20.57)	.92 (23.37)	.5625-.05P -.1L- DS-2B	.500 (12.70)	.5625-.24 UNE-F- 2A	.790 (20.07)	.0596 (15.14)	.5625-.05P- .1L-2A	.551 (14.0)	.635 (13.13)	.020 (.508)	.446 (11.33)	.600 (15.24)

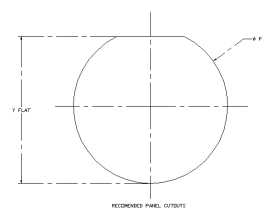
Plug



Receptacle



Cutout



		Mini-D "MD" Contacts, Tools and Sealing Plugs				Mini-D "MD" Crimp Tools	
Contact Size	Wire Size	Pin Contacts	Contacts	Sealing Plugs	Insertion Removal Tools	Crimp Tool	Positioner
	Range	Part #	Part #	Part #	Part #	Mil Spec Part #	Mil Spec or Daniels Part #
23	#22-#28	A809-1	A809-3	None	None	M22520/1-01	K1461
23	#26-#30	A809-2	A809-4	None	None	M22520/1-01	K1461
20	#20-#24	M39029/58-363	M39029/57-357			M22520/2-01	M22520/1-04
16	#16-#20	M39029/58-364	M39029/57-358			M22520/1-01	M22520/1-04
12	#12-#14	M39029/58-365	M39029/57-359			M22520/1-01	M22520/1-04

Cross Reference

The part number construction of Cinch's MD series, always starts with the prefix MD. The syntax of the part number is the same as for the Mighty Mouse® and 2M series, and differs only by the character used to describe shell material and finish.

Cinch MD	Glencair Mighty Mouse®	Amphenol 2M
MD801-xxx-yyzq-qvw	801-xxx-yyzq-qvw	2M801-xxx-yyzq-qvw

Material and finish cross reference		
5	C	C
Z	M	M
3	NF	NF
W	MT	MT
8	Z1	Z1
Q	ZNU	ZNU



How to Order Mini-D "MD" Connectors

Series MD801 - Dual start ACME thread - Plug and receptacles with crimp contacts

Main Series	MD801	007	16	3	6-7	P	A	K123
MD801 - Dual start ACME thread								
Series								
-007 - Plug with banding platform -008 - Plug with rear accessory thread -009 - Receptacle with banding platform -010 - Receptacle with rear accessory thread								
Shell Style								
-16 - Plug with anti decoupling spring -26 - Plug with ratchet mechanism -01 - Receptacle, in-line -02 - Receptacle, square flange -07 - Receptacle, jam nut								
Shell Material/Finish								
3 - Aluminum / Cadmium with olive drab chromate 5 - Aluminum / Black hard anodize, RoHS 8 - Stainless Steel / Passivated, RoHS Q - Aluminum / Black Zinc Nickel over Electroless Nickel W - Aluminum / Nickel PTFE Z - Aluminum / Electroless Nickel, RoHS								
Shell Size - Insert Arrangement								
See Table 1								
Contact Type								
P - Pin, crimp, provided separately S - Socket, crimp, provided separately								
Shell Keying								
See table 2								
Modification code								
Used for any special modification requested								

Series MD801 - Dual start ACME thread - Receptacles with PC tail or Solder cup contacts

Main Series	MD801	011	07	3	6-7	P	A	K123
MD801 - Dual start ACME thread								
Series								
-011 - Receptacle for PC tail or solder cup contacts								
Shell Style								
-02 - Receptacle, square flange -07 - Receptacle, jam nut								
Shell Material/Finish								
3 - Aluminum / Cadmium with olive drab chromate 5 - Aluminum / Black hard anodize, RoHS 8 - Stainless Steel / Passivated, RoHS Q - Aluminum / Black Zinc Nickel over Electroless Nickel W - Aluminum / Nickel PTFE Z - Aluminum / Electroless Nickel, RoHS								
Shell Size - Insert Arrangement								
See Table 3								
Contact Type								
P - Pin, PC tail S - Socket, PC tail E - Pin, Solder cup F - Socket, Solder cup								
Shell Keying								
See table 2								
Modification code								
Used for any special modification requested								

Table 1 - Shell Size-Insert CRIMP

Size-Insert	Number of contacts			
	#23	#20	#16	#12
Contact factory for available insert arrangements				

Table 3 - Shell Size-Insert

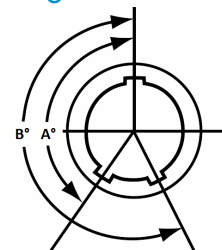
Size-Insert	Number of contacts			
	#23	#20	#16	#12
Contact factory for available insert arrangements				

Table 2 - Shell keying

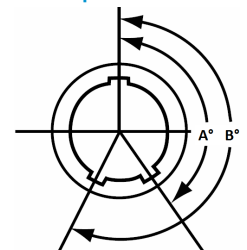
Size-Insert	Number of contacts	
	A°	B°
A	150°	210°
B	75°	210°
C	95°	230°
D	140°	275°
E	75°	275°
F	95°	210°



Plug



Receptacle



12400-8 S.W. 134th Court
Miami, Florida 33186 USA

+1 305.234 1000
inquiry@cinch.com
cinch.com